

RE400

Insights into your business via Real-Time Data and Artificial Intelligence



From yellow iron to heavy duty machinery, the RE400 device within DIRECTOR offers the benefit of an AI-powered fleet management solution with the real-time data captured from your assets. Derive metrics key to your business direct from your equipment - the RE400 is able to collect key data from sources such as GPS, GPIO, CAN bus, engine data, and more. The information is available instantly via tracking, insights and analytics where you can easily view current status, alerts and ask detailed questions or run customised reporting.



Turning Data into Decisions

RE400 captures key data from your operators and equipment, including engine hours, harsh usage metrics and maintenance information, and delivers it to DIRECTOR that transforms this into insights for your business.

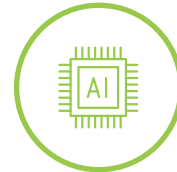
- Get second-by-second tracking for real-time equipment and engine status updates
- Capture safety events such as harsh acceleration, braking and cornering, via the gyroscope and accelerometer
- Helps to keep track of asset maintenance



Powering Insights

Together with DIRECTOR, the RE400 enables you to access business insights through easy to use analytics tools.

- Build your own dashboard filled with key metrics to help you with real-time decisions
- Visualised analytics into key performance areas including productivity and safety
- Instant access to reporting for trip details, driver events, vehicle performance, maintenance, alerts and more




Delivers Integrated Applications

The data captured via the RE400 also powers the DIRECTOR driver application that keeps you connected with your workforce throughout the day. Your operator and engine data is all available in real-time.

- Professionally installed across a range of your yellow iron and heavy duty machinery
- Ability to integrate with third party solutions
- Range of connectivity including GPS, CAN bus, and general purpose input / output (GPIO)

TECHNICAL SPECIFICATIONS

RE400	
CERTIFICATIONS AND RATINGS	
Certifications	NA: FCC Part 15 Class B, IC, NOM UK/EU: CE, REACH, WEEE, ROHS ANZ: RCM
Environmental Compliance	SAE J1455 – 2006
Ratings	IP67
Network Approvals	AT&T, O2, Telstra
COMPREHENSIVE I/O	
Input / Output	4 Digital Inputs, 3 Digital Outputs
CONNECTIVITY	
Connectivity	Internal 4G LTE Cat M1 modem
GNSS	GLONASS/GALILEO/BEIDOU/GPS (USA)
Vehicle bus	J1939/J1708
OBDII Protocols Supported	ISO 15765-4
RS232	2
DEVICE DETAILS	
Accelerometer & Gyroscope	Yes, Gyro (6-Dof)
Battery	6200mAh LiPo
Record Storage (Flash Memory)	16MB flash memory
Antenna	Optional
LEDs	5
Size	Height 40 mm Width 102 mm Length 182 mm
Tracking	Second by second data
Weight	495g
Supply Voltage	6VDC – 48VDC
Current Consumption (Sleep Mode)	<3mA@12VDC
Current Consumption (Nominal)	80mA@12VDC
ENVIRONMENTAL	
Battery Operating Temp	-20 to 60°C / -4 to 140°F
FIRMWARE UPDATES	Over-the-air (OTA)
INSTALLATION	Professional 3-wire install through Teletrac Navman's installation team
MOBILE APPLICATION	DIRECTOR application for Android and iOS devices
SUPPORTS PLATFORM	DIRECTOR

FEATURES

FEATURE FOCUS	DIRECTOR
Power	✓
Timed Updates (60 seconds default)	✓
Messaging (via MNAV)	✓
Ignition On/Off	✓
GPS Idle & GPS Overspeed	✓
High Definition Data	✓
Fringe Benefits Tax ¹	✓
Driver ID ¹	✓
Fuel Tax Credits*	✓
Sites / Geofences (Entry/Exit, Unassigned Entry/Exit Alerting)	✓
Sites with live alerts (Entry/Exit notifications)	✓
Safety Analytics / Harsh Usage (Excessive Acceleration, Harsh Braking)	✓
Asset Usage (Distance/Time via ConEx)	✓
ConEx (Digital Inputs / Outputs)	✓
Idle alerting	✓
Overspeed Alerting	✓
EMS Reporting (End of trip, Fuel use)	✓
Driver (Status and hours) ¹	✓
Integrations & API*	✓

* Optional extras

¹ Requires MT501 Device