



## MT501

# The new generation of driver productivity technology

Staying in contact with your staff in the field both safely and effectively is no easy feat. Ensuring they're productive at the same time can be a challenge. Teletrac Navman Drive, available on the MT501 device, is a powerful suite of in-vehicle applications built to enhance driver efficiency, productivity and safety. This comprehensive

line of apps helps drivers stay on task via a wide range of in-cab tools, such as clear voice-activated navigation, instant two-way messaging, signature capture, engine performance monitoring and more. With a comprehensive suite of application, help your drivers stay on task and improve your business's workflow.



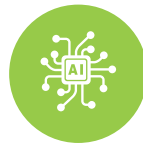
### Improve Safety

Get proactive about driver safety and vehicle maintenance



### Increase Productivity

All-in-one device that automates previously manual tasks



### Digitised Workflow

Reduce the amount of manual process through a digital workflow



### Transform your Business

Technology and its data to reduce costs, improve productivity & increase performance

## KEY FEATURES

Voice-guided navigation and routing for faster driver response times and reduced vehicle use.

Instant driver-dispatch communication and manager-based routing messages for immediate updates.

Paperless, customisable forms for receiving and tracking job information like customer contact details.

Enables drivers to collect and submit delivery confirmations and signatures right from the field.

Allows drivers the ability to see their current speed, RPM, vehicle temperature, fuel or oil pressure, providing insight into engine performance (requires additional sensors).

Enables drivers to enter a truck profile for specific road guidelines, such as size and weight restrictions on city roads, HazMat regulations, and day/night mode.